

DENTAL LED LIGHT





TECHNICAL FEATURES

Weight: 1,9 Kg (light arm not included)
 Power supply: 17-24 Vac
 Power consumption: 20W
 Dimension of Pattern: 70x140 mm
 Light Intensity: 8.000 - 35.000 lux
 Colour Temperature: 4.200-6.000 K
 Colour rendering index (CRI): >85

In conformity with directive:

93/42 CEE class 1

Applicable Norm: UNI EN ISO9680,

CEI_EN 60825-1;

CEI EN 60601-1; CEI EN 60601-1-2; UNI

CEI EN ISO 14971

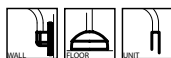
Technical features have a tolerance of +/- 10%


Available colours:

**RAL 9010, RAL 9006, RAL 9005,
 RAL 9016, RAL 9002, RAL 9003...**

** for more information about warranty see page 84

DENTAL LIGHT with arm 1470 mm (on request 1670 mm)



86710000	DENTAL LIGHT POLARIS SWITCH
86SM0000	DENTAL LIGHT POLARIS SENSOMATIC
86710000M3	DENTAL LIGHT POLARIS SWITCH, 3 rd AXIS Mov.
86SM0000M3	DENTAL LIGHT POLARIS SENSOMATIC, 3 rd AXIS Mov.
	
86660000	DENTAL LIGHT POLARIS SWITCH, FOR CEILING APPLICATION
86SC0000	DENTAL LIGHT POLARIS SENSOMATIC FOR CEILING APPLICATION
86660000M3	DENTAL LIGHT POLARIS SWITCH, FOR CEILING APPLICATION, 3 rd AXIS Mov.
86SC0000M3	DENTAL LIGHT POLARIS SENSOMATIC, 3 rd AXIS Mov., FOR CEILING APPLICATION
86H1000000	POLARIS LIGHT HEAD SWITCH
86H1100000	POLARIS LIGHT HEAD SENSOMATIC
86H2000000	POLARIS LIGHT HEAD SWITCH, 3 rd AXIS Mov.
86H2100000	POLARIS LIGHT HEAD SENSOMATIC, 3 rd AXIS Mov.



SPARE PARTS

86.H000.0003SP	LEDs assembly with dissipator including reflectors
86.E000.0017	Left Handle & Right Handle including handle cover 86.E000.0020
86.E000.0020	Handle Cover only
86.E000.0006	Protection screen

COLOUR TEMPERATURE REGULATION

through a regulation system (**G.Comm** patented) it is possible to adjust the colour temperature from 4.200 K to 6.000 K in order to improve the contrast on soft tissues.

LIGHT INTENSITY

it is possible to adjust illuminance from 8.000 to 35.000 lux, as a function of the specific application, reducing eyestrain.

SCIALITIC EFFECT

the clear geometry of reflectors, in combination with each LED source, allows to realize a luminous flux which is homogeneous, clean and without shadows.

LOW CONSUME and HIGH LIFETIME

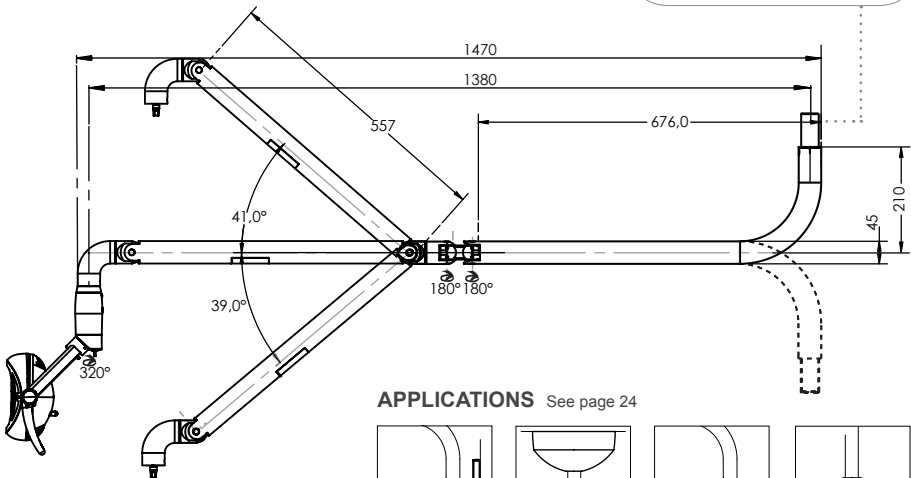
The low values of current and voltage (< 20 W), required to supply the light source, minimize the heat production, making the fan cooler not necessary. LED lifetime is higher than halogen light.

ABSENCE OF UV AND INFRARED RAYS

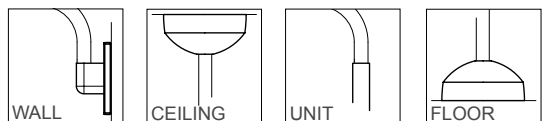
Polaris doesn't generate UV rays, dangerous for biological tissues.

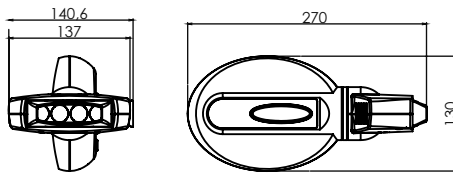
NOISE ABSENCE

ARM PIVOT:
standard size for unit mount
35mm, others sizes available on
request, call us for more information



APPLICATIONS See page 24





CORE WHITE

86.L100.0000	Core White only for Polaris
---------------------	-----------------------------

TECHNICAL FEATURES

Weight: approx. 800g
 Power supply: 17-24Vac
 Maximum power consumption: 30VA
 Current consumption: 1.5A
 Light pattern: 80x20mm
 Light source: 4LEDs (3.5W each)
 Emission spectrum: 420-480nm
 Maximum light power emitted: 2000mW
 Maximum distance from patient: 10cm

Core white is a bleaching light system easily to be applied directly to POLARIS removing a handle.

Through LED technology is possible to get the desired light intensity for different operation purposes.

No external supports, make the operation area free from any obstruction.



MIRROR AND FILTER

86.C102.0000	mirror and anti-polymerization filter kit
---------------------	---

The need of a visual communication between operator and patient has lead to the creation of a pull-out MIRROR for POLARIS, allowing the patient to follow the treatment.

The ANTI-POLYMERIZATION FILTER is another example of kind attention towards the patient.

This filter is easily interchangeable with the MIRROR through a simple dap joint device. The purpose of this accessory is to reduce spectrum of light emission avoiding activation of the composite, even with the maximum light intensity.

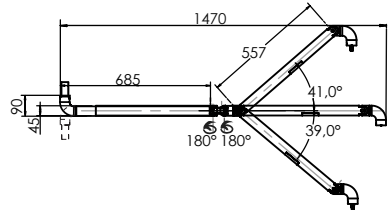
APPLICATIONS



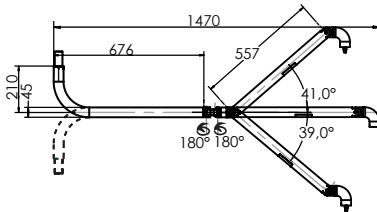
LIGHT ARM



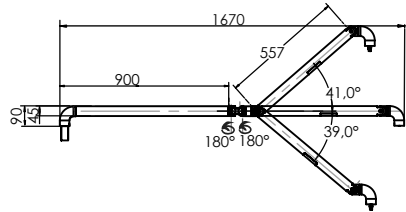
- 86460000/F** 1470 mm unit standard arm
- 86570000** 1470 mm ceiling standard arm



- 86460000P** 1470 mm unit bended arm
- 86570000P** 1470 mm ceiling bended arm



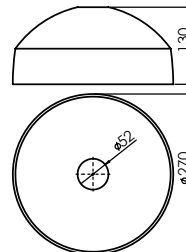
- 86460000FL** 1670 mm unit long arm



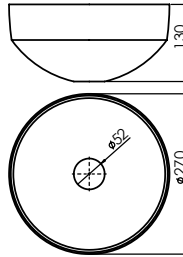
FLOOR APPLICATION



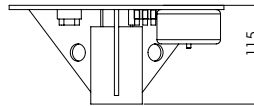
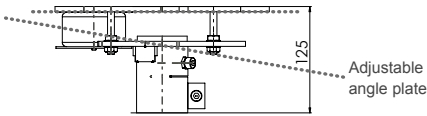
- 82120010** floor application
- 82120001** floor column



CEILING APPLICATION



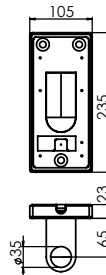
82100005/12V	ceiling application with transformer 12V included
82100005/24V	ceiling application with transformer 24V included (polaris version)
82100011/12V	ceiling application with adjustable plates and transformer 12V included
82100011/24V	ceiling application with adjustable plates and transformer 24V included (polaris version)
82110001	ceiling column Ø=50mm L=135cm
82110002	ceiling column Ø=50mm L=165cm



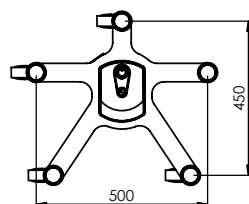
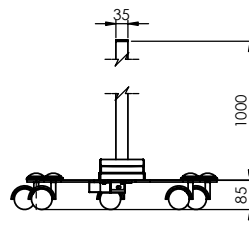
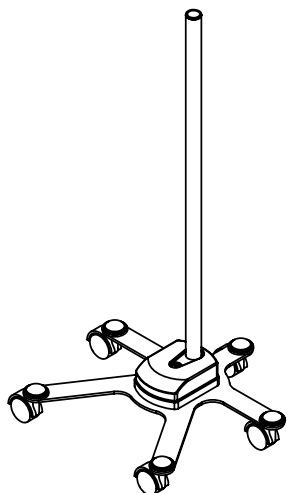
82100011	ceiling application with adjustable plates without transformer
-----------------	--

82100005	ceiling application standard without transformer
-----------------	--

WALL APPLICATION



82090000	wall mount (235mm x 105mm)
39010007	transformer 230/12V



TROLLEY APPLICATION

83010000 | trolley on 5 wheels
Including: pole h=1000 mm - Transformer 230 Vac



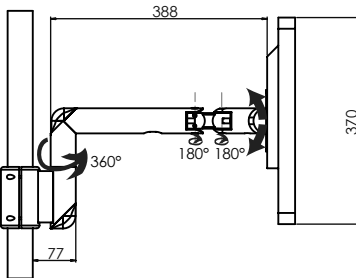
ARMS & SUPPORTS



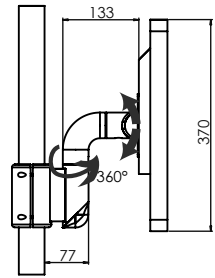


Complete SVGA cable
for monitor arm:

- 87010023** | lenght 5 mt
- 87010028** | lenght 10 mt



- 87010000** | monitor arm complete with SVGA, video and power supply cable
- 87010000/NC** | monitor arm without cable

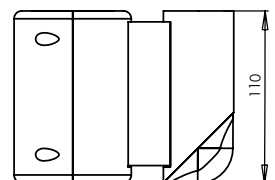
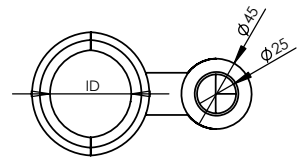


- 87030000** | short monitor arm complete with SVGA, video and power supply cable
- 87030000/NC** | short monitor arm without cable

MONITOR ARM CLAMPS

Available in the following diameters:

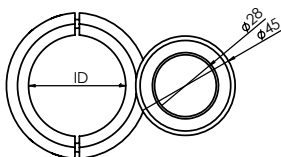
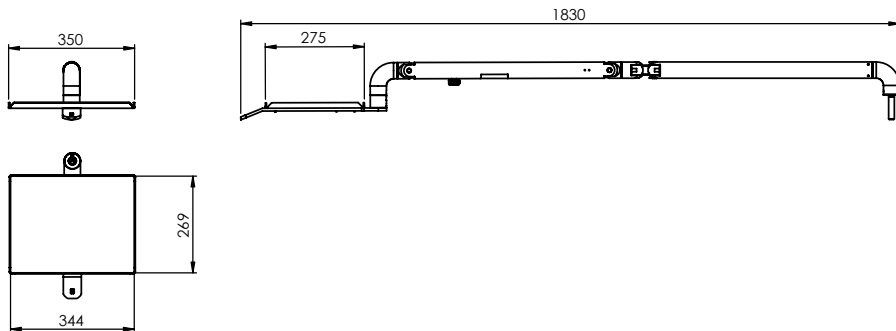
- 87010013** | clamp ID 45mm
- 87010014** | clamp ID 50 mm
- 87010022** | clamp ID 55 mm
- 87010036** | clamp ID 60 mm
- 87010043** | rubber clamp shim





87E000000	tray arm with table
86150009	tray table (368x286mm)

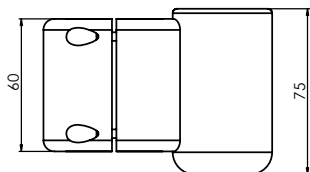
G.Comm tray arm is made to support dental instruments and holding trays. It's provided with a balanced movement on the vertical axis and a locking system that allows a steady positioning at the desired height.



TRAY ARM CLAMPS

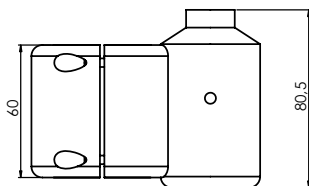
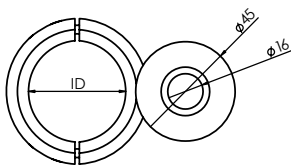
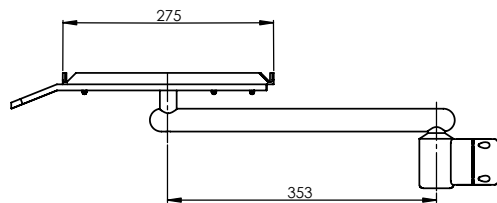
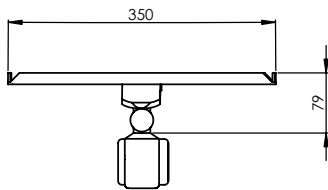
Available in the following diameters:

86150080	clamp ID 45 mm
86150081	clamp ID 50 mm
86150086	clamp ID 55 mm
86150082	clamp ID 60 mm



86150066 | assistant tray arm

G.Comm assistant tray arm is made to support dental instruments and holding trays.



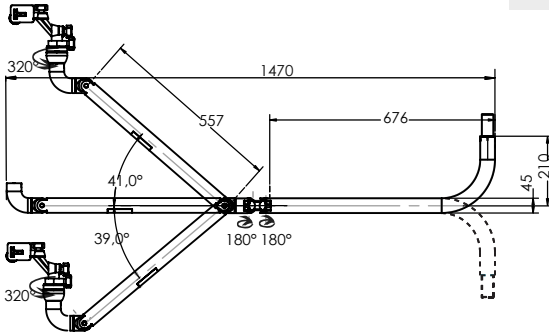
TRAY ASSISTANT CLAMPS

Available in the following diameters:

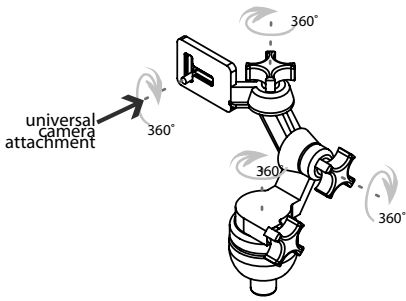
- 86150064** | clamp ID 45mm
- 86150065** | clamp ID 50 mm
- 86150089** | clamp ID 55 mm
- 86150072** | clamp ID 60 mm



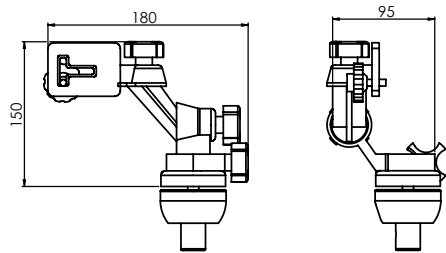
87.C100.0000 | videocamera arm with cable kit



DEGREES OF MOTION



TECHNICAL DIMENSIONS



MONITOR TFT LCD (15" & 17") WITH VIDEO-IN, 12 V



TECHNICAL FEATURES

- SXGA 1280 x 1024 resolution
- Durable metal casing
- High 3000:1 dynamic contrast ratio
- S-Video, composite, analogue, digital inputs
- EN60601-1 medical certification
- Equipotential Terminal safety standard
- Optional handle allows for easy movement of display
- Auto-adjustment for optimal settings
- Kensington® security socket
- VESA standard mount 100 mm

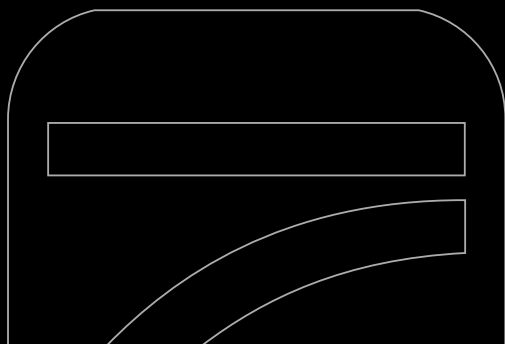
SUPPLIED ACCESSORIES

- quick guide
- CD ROM (user manual and drivers)
- 15-Pin D-Sub cable
- 24-Pin DVI cable
- S-Video cable
- CVBS cable
- AC power cord 1.8 m
- DC power cord 5 m
- power adaptor

87500015	monitor 15" with standard vesa mounting
87500017	monitor 17" with standard vesa mounting
87500017DR	monitor 17" with standard vesa-mounting, medical certification

Available in black and white colour.





WWW.GCOMM-ONLINE.COM